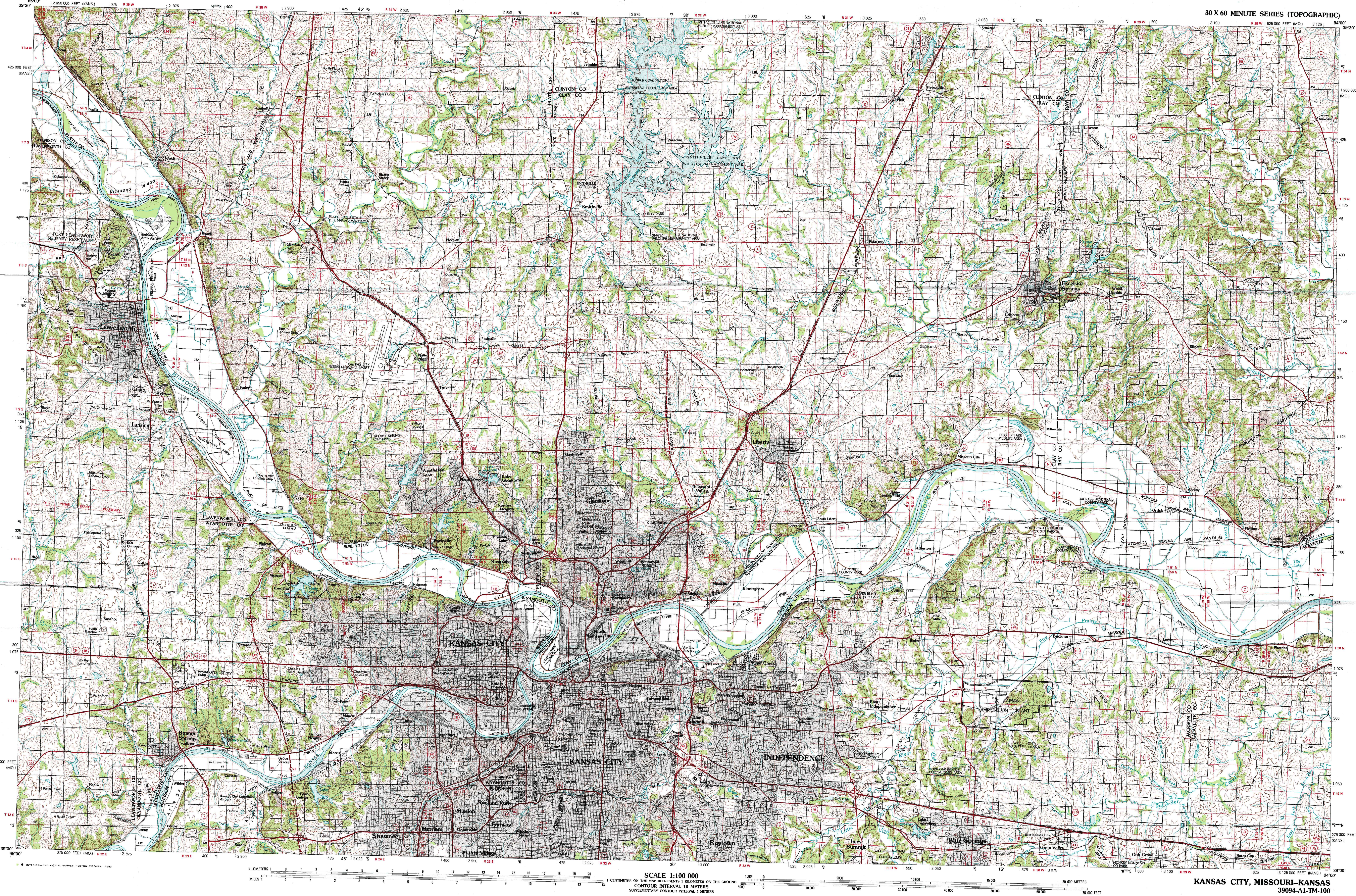


KANSAS CITY, MISSOURI-KANSAS



39094-A1-TM-100

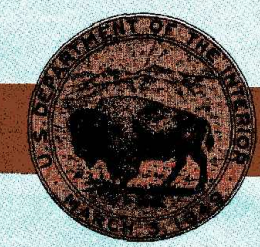
Kansas City  
MISSOURI-KANSAS

1:100 000-scale metric  
topographic map



30 X 60 MINUTE QUADRANGLE  
SHOWING

- Contours and elevations in meters
- Highways, roads and other manmade structures
- Water features
- Woodland areas
- Geographic names



GEOLOGICAL SURVEY

1983

Produced by the United States Geological Survey  
Compiled from USGS 1:24 000 and 1:62 500-scale topographic maps dated 1948-1979. Planimetry revised from aerial photographs taken 1978 and 1980 and other source data. Revised information not field checked. Map edited 1983  
Projection and 10 000-meter grid, zone 15,  
Universal Transverse Mercator  
25 000-foot grid ticks based on Missouri coordinate system, west zone, and Kansas coordinate system, north zone  
1927 North American Datum  
To place on the predicted North American Datum 1983 move the projection lines 3 meters north and 20 meters east  
There may be private inholdings within the boundaries of the National or State reservations shown on this map

CONTOUR INTERVAL 10 METERS  
SUPPLEMENTARY CONTOUR INTERVAL 5 METERS  
NATIONAL GEODETIC VERTICAL DATUM OF 1929  
ELEVATIONS SHOWN TO THE NEAREST METER

THIS MAP COMPLIES WITH NATIONAL MAP ACCURACY STANDARDS

CONVERSION TABLE		DECLINATION DIAGRAM	ADJOINING MAPS		
Meters	Feet		1	2	3
1	3.281		1	2	3
2	6.562		4	5	
3	9.843				
4	13.124				
5	16.404				
6	19.686				
7	22.967				
8	26.248				
9	29.529				
10	32.808				
To convert meters to feet multiply by 3.281		UTM grid convergence (GM) and 1983 magnetic declination (MD) at center of map. Diagram is approximate.	4	5	
To convert feet to meters multiply by 0.3048			6	7	8

FOR SALE BY U. S. GEOLOGICAL SURVEY, DENVER, COLORADO 80225  
OR RESTON, VIRGINIA 22092

Topographic Map Symbols

Primary highway, hard surface	
Secondary highway, hard surface	
Light duty road, principal street, hard or improved surface	
Other road or street; trail	
Railroad, standard gauge, narrow gauge	
Bridge, overpass, underpass	
Tunnel, road, railroad	
Built up area, locality, elevation	
Archer, windmill, field, landing strip	
National boundary	
State boundary	
County boundary	
National or State reservation boundary	
Land grant boundary	
U.S. public lands survey: range, township, section	
Rampa, township; section line; protected	
Power transmission line, pipeline	
Cave; dam with lock	
Cemetery, building	
Windmill; water well; spring	
Mine shaft; adit or cave; mine, quarry; gravel pit	
Campground; picnic area; U.S. location monument	
Railroad; strip, mining	
Distorted surface, strip mine, levee, sand	
Contours: index, intermediate, supplementary	
Bathymetric contours: index, intermediate	
Stream lake: perennial, intermittent	
Rapids, large and small; falls, large and small	
Area to be submerged, marsh, swamp	
Land subject to controlled inundation, woodland	
Scrub, mangrove	
Ordinary vineyard	

A pamphlet describing topographic maps is available on request

KANSAS CITY, MISSOURI-KANSAS  
39094-A1-TM-100

1983