

# Manhattan KANSAS

1:100 000-scale metric  
topographic map



30 X 60 MINUTE QUADRANGLE  
SHOWING

- Contours and elevations in meters
- Highways, roads and other manmade structures
- Water features
- Woodland areas
- Geographic names

GEOLOGICAL SURVEY

1990

Produced by the United States Geological Survey  
Compiled from USGS 1:24 000-scale topographic maps dated 1953-1983. Planimetry revised from aerial photographs taken 1985 and other source data. Revised information not field checked. Map edited 1990.  
Projection and 10 000-meter grid, zone 14, Universal Transverse Mercator  
25 000-foot grid ticks based on Kansas coordinate system, north zone  
1927 North American Datum  
To place on the predicted North American datum 1983, move the projection lines 2 meters north and 25 meters east  
There may be private inholdings within the boundaries of the National or State reservations shown on this map

CONTOUR INTERVAL 10 METERS  
NATIONAL GEODETIC VERTICAL DATUM OF 1929  
ELEVATIONS SHOWN TO THE NEAREST METER

THIS MAP COMPLIES WITH NATIONAL MAP ACCURACY STANDARDS

CONVERSION TABLE		DECLINATION DIAGRAM	ADJOINING MAPS		
Meters	Feet		1	2	3
1	3.2808		4	5	
2	6.5615		6	7	8
3	9.8423				
4	13.1230				
5	16.4037				
6	19.6845				
7	22.9652				
8	26.2460				
9	29.5267				
10	32.8074				

To convert meters to feet multiply by 3.2808  
To convert feet to meters multiply by 0.3048

UTM grid convergence (000 and 000 magnetic declination (M/N) at center of map  
Diagram is approximate

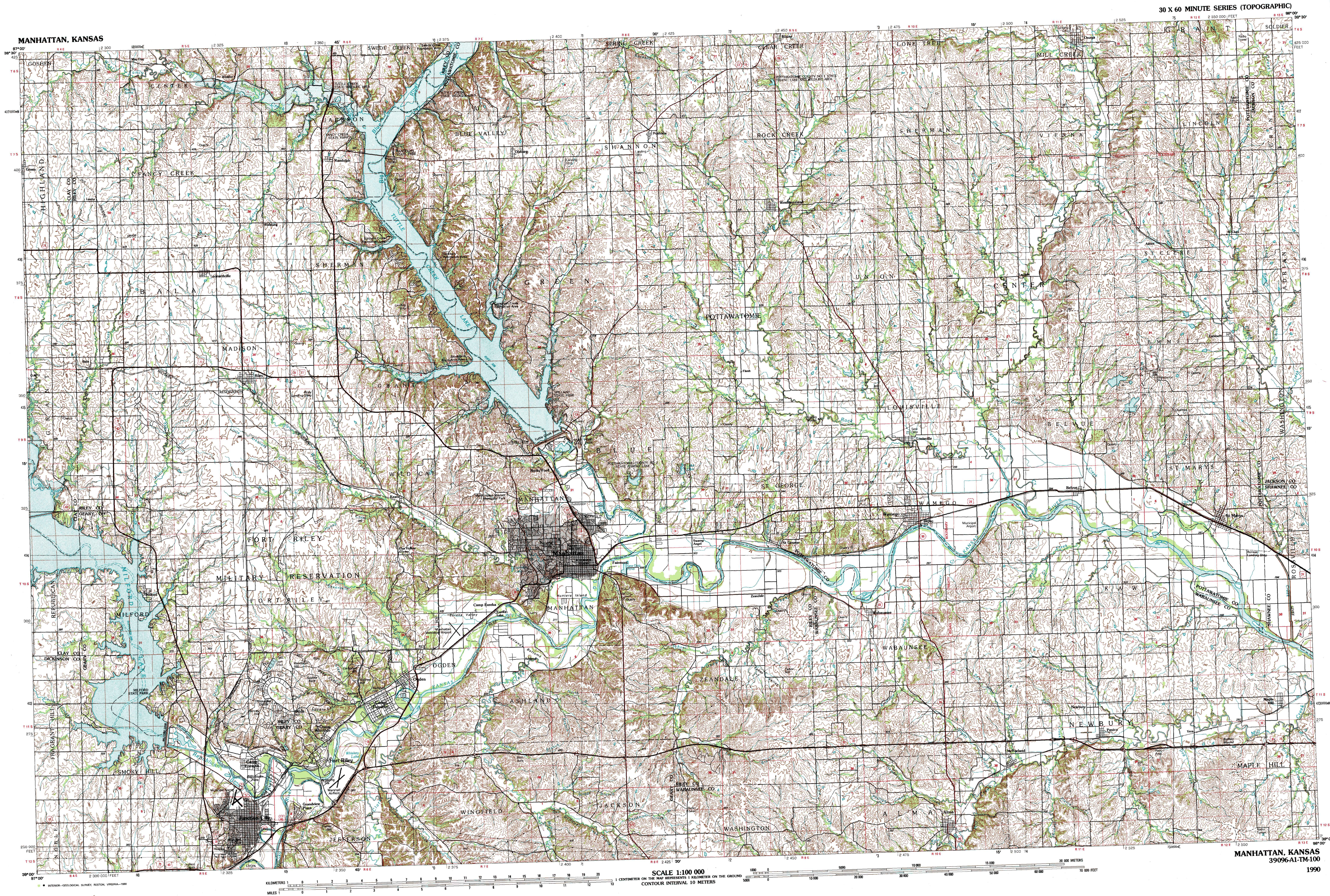
1 Concordia  
2 Blue Rapids  
3 Atchison  
4 Clay Center  
5 Topeka  
6 Salina  
7 Council Grove  
8 Lawrence

FOR SALE BY U.S. GEOLOGICAL SURVEY  
DENVER, COLORADO 80225, OR RESTON, VIRGINIA 22092

## Topographic Map Symbols

Primary highway, hard surface	
Secondary highway, hard surface	
Light duty road, principal street, hard or improved surface	
Other road or street; trail	
Route marker: Interstate; U.S. State	
Railroad: standard gage, narrow gage	
Bridge: overpass, underpass	
Tunnel: road, railroad	
Built up area; locality: elevation	
Airport: landing field; landing strip	
National boundary	
State boundary	
County boundary	
National or State reservation boundary	
Land grant boundary	
U.S. public lands survey: range, township, section	
Pump, township; section line, projected	
Power transmission line; pipeline	
Dam; dam with lock	
Cemetery; building	
Windmill; water well; spring	
Mine shaft; adit or cave; mine; quarry; gravel pit	
Campground; picnic area; U.S. location monument	
Ruin; cliff dwelling	
Distorted surface: strip mine, lava; sand	
Contours: index; intermediate; supplementary	
Bathymetric contours: index; intermediate	
Stream, lake, reservoir; intermittent	
Rapids, large and small; falls, large and small	
Area to be submerged; marsh, swamp	
Land subject to controlled inundation; woodland	
Scrub; mangrove	
Orchard; vineyard	

A pamphlet describing topographic maps is available on request



SCALE 1:100 000

1 CENTIMETER ON THE MAP REPRESENTS 1 KILOMETER ON THE GROUND  
CONTOUR INTERVAL 10 METERS

CONTOUR INTERVAL 10 METERS

CONTOUR INTERVAL 10 METERS

CONTOUR INTERVAL 10 METERS

CONTOUR INTERVAL 10 METERS

CONTOUR INTERVAL 10 METERS