

Great Bend

KANSAS

**1:100 000-scale *metric*
topographic map**



30 X 60 MINUTE QUADRANGLE SHOWING

- Contours and elevations in meters
- Highways, roads and other manmade structures
- Water features
- Woodland areas
- Geographic names



1985
PHOTOINSPECTED 1985

Produced by the United States Geological Survey

Compiled from USGS 1:24 000-scale topographic maps dated 1956-1983. Planimetry revised from aerial photographs taken 1981 and other source data. Revised information not field checked. Map edited 1985

Projection and 10 000-meter grid, zone 14,
Universal Transverse Mercator

25 000-foot grid ticks based on Kansas coordinate system, south zone

To place on the predicted North American Datum 1983, move

There may be private inholdings within the boundaries of

There may be private inholdings within the boundaries of the National or State reservations shown on this map

Map photoinspected using 1985 photographs
No major culture or drainage changes found

CONTOUR INTERVAL 5 METERS
NATIONAL GEODETIC VERTICAL DATUM OF 1929

ELEVATIONS SHOWN TO THE NEAREST METER

THIS MAP COMPLIES WITH NATIONAL MAP ACCURACY STANDARDS

CONVERSION TABLE

Meters	Feet
1	3.2808
2	6.5617
3	9.8425
4	13.1234
5	16.4042
6	19.6850
7	22.9659
8	26.2467
9	29.5276
10	32.8084

To convert meters to feet multiply by 3.2808

To convert feet to meters multiply by 0.3048

DECLINATION DIAGRAM

UTM grid convergence (GN and MN), magnetic declination (MN) at center of map diagram is approximate

ADJOINING MAPS

1	2
1	2
6	7

1 Hays
2 Russell
3 Salina
5 Hutchinson
6 Kinley
7 Pratt
8 Wichita

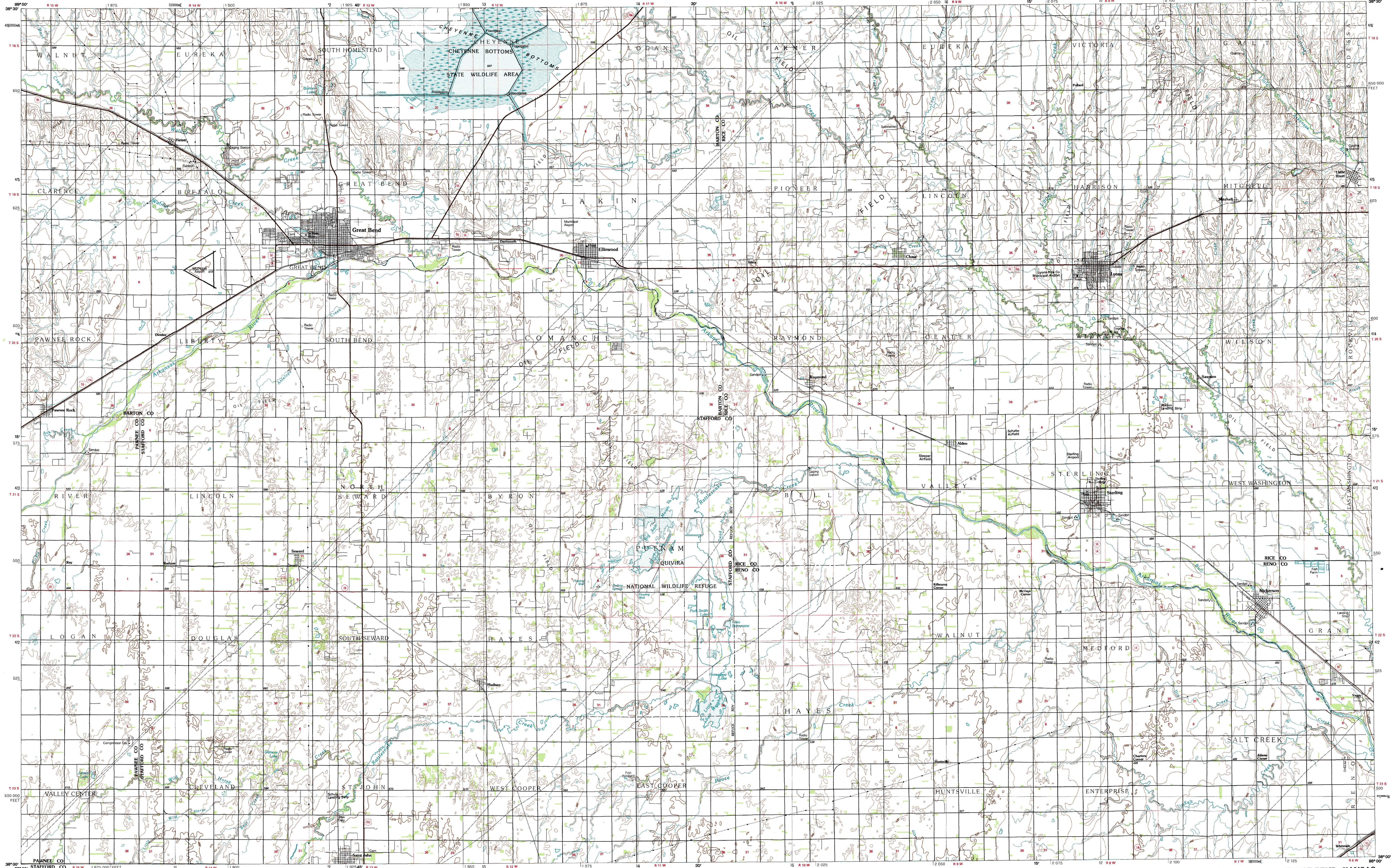
FOR SALE BY U. S. GEOLOGICAL SURVEY
DENVER, COLORADO 80225, OR RESTON, VIRGINIA 20192

DENVER, COLORADO 80220, ON RESTON, VIRGINIA 22091.

Topographic Map Symbols

Primary highway, hard surface	
Secondary highway, hard surface	
Light duty road, principal street, hard or improved surface	
Other road or street; trail	
Route mark: Interstate; U.S. Route	
State route; standard gauge; narrow gauge	
Bridge; overcross; underpass	
Tunnel; road; railroad	
Built up area; locality; elevation	
Airport; landing field; landing strip	
National boundary	
State boundary	
County boundary	
National or State reservation boundary	
Land grant boundary	
U.S. public lands survey: range, township; section	
Range, township; section line: projected	
Power transmission line: pipeline	
Other: can; with lock	
Cemetery; building	
Windsail; water wheel; spring	
Mine shaft; edit of cave; mine, quarry; gravel pit	
Campground; picnic area; U.S. location monument	
Rains; cliff	
Distorted surface: strip mine, lava; sand	
Swamp; marsh; intertidal; supplementary	
Bathymetric contour; index; intermediate	
Stream, lake; perennial; intermittent	
Rapids, large and small; falls, large and small	
Area to be submerged; marsh; swamp	
Land subject to controlled inundation; woodland	
Swamp	
Oyster; shellfish	

A pamphlet describing topographic maps is available on request



GREAT BEND, KANSAS
38098-A1-TM-100

1985