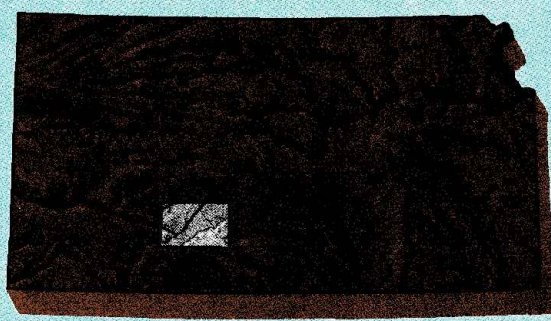


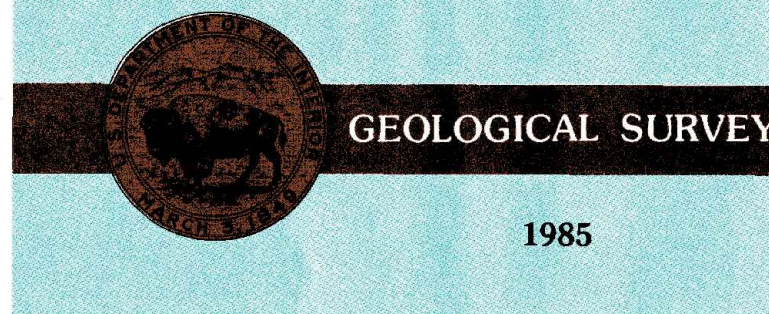
# Kinsley KANSAS

1:100 000-scale metric  
topographic map



## 30 X 60 MINUTE QUADRANGLE SHOWING

- Contours and elevations in meters
- Highways, roads and other manmade structures
- Water features
- Woodland areas
- Geographic names



Produced by the United States Geological Survey  
Compiled from USGS 1:24 000-scale topographic maps dated 1968-1984. Planimetry revised from aerial photographs taken 1981 and other source data. Revised information not field checked. Map edited 1985.  
Projection and 10 000-meter grid, zone 14, Universal Transverse Mercator.  
25 000-foot grid ticks based on Kansas coordinate system, south zone.  
1927 North American Datum.  
To place on the predicted North American Datum 1983, move the projection lines 1 meter north and 33 meters east.  
There may be private inholdings within the boundaries of the National or State reservations shown on this map.

CONTOUR INTERVAL 10 METERS  
NATIONAL GEODETIC VERTICAL DATUM OF 1929  
ELEVATIONS SHOWN TO THE NEAREST METER

THIS MAP COMPLIES WITH NATIONAL MAP ACCURACY STANDARDS

# CONVERSION TABLE

Meters	Feet
1	3.2808
2	6.5617
3	9.8425
4	13.1234
5	16.4042
6	19.6850
7	22.9659
8	26.2467
9	29.5276
10	32.8084

To convert meters to feet multiply by 3.2808

To convert feet to meters multiply by 0.3048

# DECLINATION DIAGRAM

UTM grid convergence (GN) and 1983 magnetic declination (MN) at center of map. Diagram is approximate.

UTM grid convergence (GN) and 1983 magnetic declination (MN) at center of map. Diagram is approximate.

# ADJOINING MAPS

1	2	3
4	5	6
7	8	9

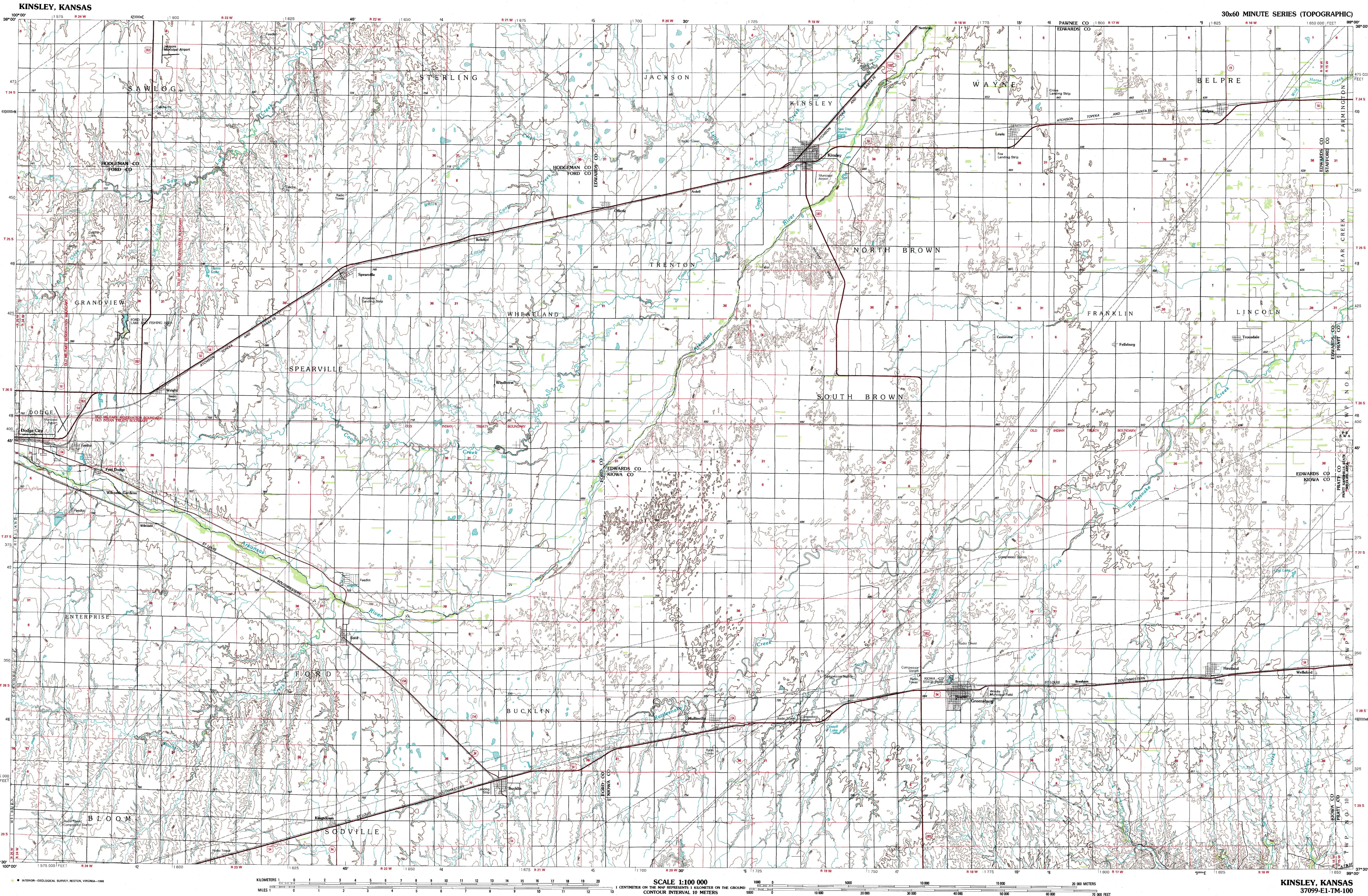
1 Scott City  
2 Larned  
3 Great Bend  
4 Dodge City  
5 Pratt  
6 Liberal  
7 Protection  
8 Medicine Lodge

FOR SALE BY U.S. GEOLOGICAL SURVEY  
DENVER, COLORADO 80225, OR RESTON, VIRGINIA 22092

## Topographic Map Symbols

Primary highway, hard surface	
Secondary highway, hard surface	
Light duty road, principal street, hard or improved surface	
Other road or street, road	
Route marker, interstate, U.S., State	
Railroad: standard gage, narrow gage	
Bridge: overpass, underpass	
Tunnel: road, railroad	
Rail up area, locality, elevation	
Airport: landing field, landing strip	
National boundary	
State boundary	
County boundary	
National or State reservation boundary	
Land grant boundary	
U.S. public lands survey: range, township, section	
Range, township, section line: projected	
Power transmission line: pipeline	
Dam; dam with lock	
Cemetery; building	
Wellhead; water well; spring	
Mine shaft; adit or cave; mine, quarry; gravel pit	
Campground; picnic area; U.S. location monument	
Ruin; cliff dwelling	
Distorted surface: strip mine, lava; sand	
Contours: index, intermediate, supplementary	
Bathymetric contours; index, intermediate	
Stream, lake; perennial, intermittent	
Rapids, large and small; falls, large and small	
Area to be submerged; marsh, swamp	
Land subject to controlled inundation; woodland	
Scrub; mangrove	
Gravel; gravel	

A pamphlet describing topographic maps is available on request



KINSLEY, KANSAS  
37099-E1-TM-100