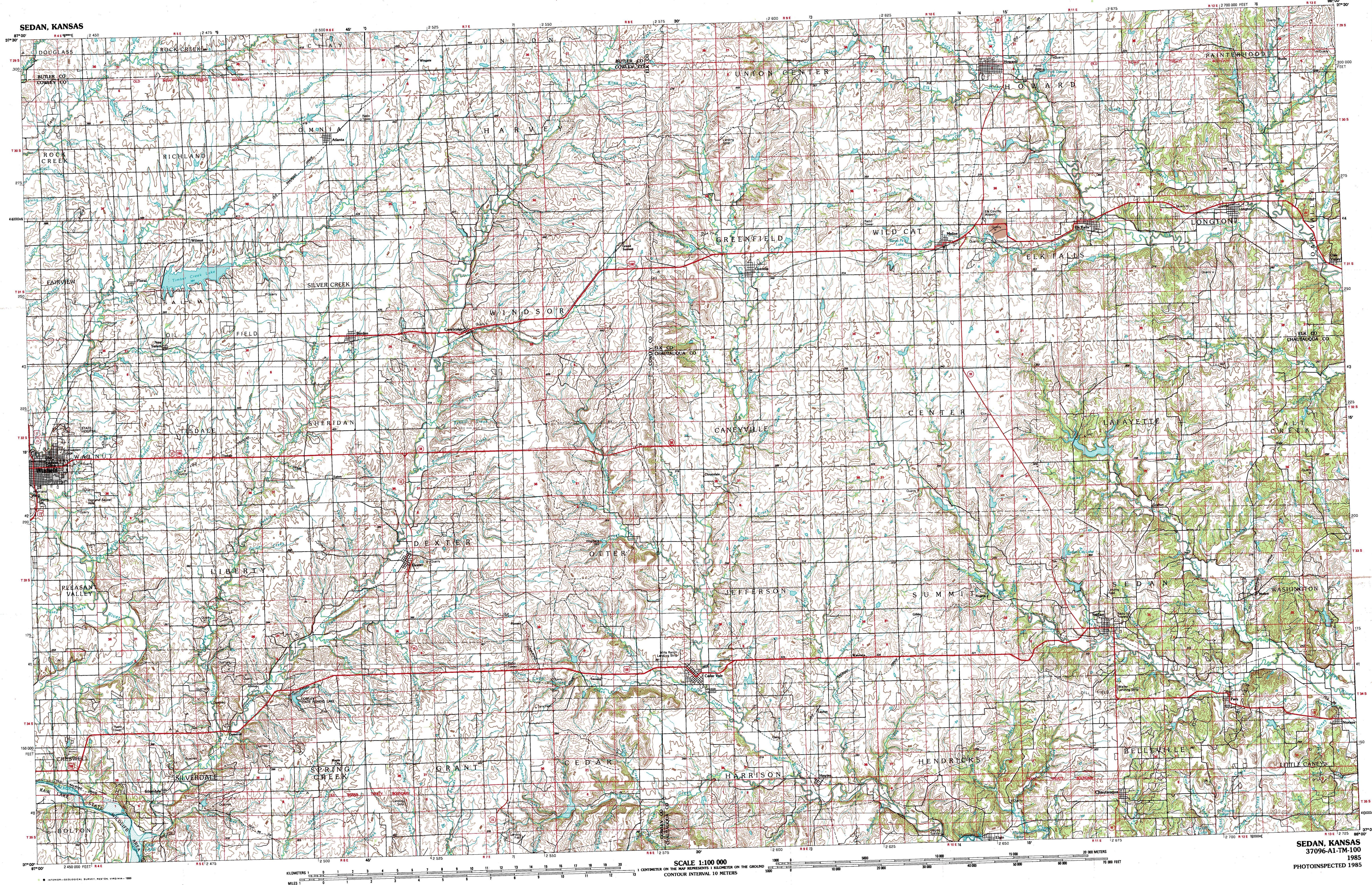


SEDAN, KANSAS

Sedan
KANSAS1:100 000-scale metric
topographic map30 X 60 MINUTE QUADRANGLE
SHOWING

- Contours and elevations in meters
- Highways, roads and other manmade structures
- Water features
- Woodland areas
- Geographic names



GEOLOGICAL SURVEY

1985
PHOTOINSPECTED 1985

Produced by the United States Geological Survey
Compiled from USGS 1:24 000-scale topographic maps dated 1962-1979. Planimetry revised from aerial photographs taken 1981 and other source data. Revised information not field checked. Map edited 1985.

Projection and 10 000-meter grid, zone 14,
Universal Transverse Mercator
25 000-foot grid ticks based on Kansas coordinate system, south zone
1927 North American Datum
To place on the projected North American Datum 1983, move the projection lines 1 meter south and 25 meters east

There may be private inholdings within the boundaries of the National or State reservations shown on this map
Map photoinspected using 1985 photographs
No major culture or drainage changes found

CONTOUR INTERVAL 10 METERS
NATIONAL GEODETIC VERTICAL DATUM OF 1929
ELEVATIONS SHOWN TO THE NEAREST METER

THIS MAP COMPLIES WITH NATIONAL MAP ACCURACY STANDARDS

CONVERSION TABLE		DECLINATION DIAGRAM	ADJOINING MAPS			
Meters	Feet		1	2	3	
1	3.2808		4	5		
2	6.5617					
3	9.8425					
4	13.1234					
5	16.4042					
6	19.6850					
7	22.9658					
8	26.2466					
9	29.5274					
10	32.8082					
To convert meters to feet multiply by 3.2808		UTM grid convergence (GN) and 1983 magnetic declination (MD) at center of map. Diagram is approximate.	1	2	3	
To convert feet to meters multiply by 0.3048			4	5	6	
			7	8		

FOR SALE BY U.S. GEOLOGICAL SURVEY
DENVER, COLORADO 80225, OR RESTON, VIRGINIA 22092

Topographic Map Symbols

Primary highway, hard surface	
Secondary highway, hard surface	
Light duty road, principal street, hard or improved surface	
Other road or street, road	
Road marker: Interstate, U.S., State	
Railroad: standard gauge, narrow gauge	
Bridge: overpass, underpass	
Tunnel: road, railroad	
Bank to one, height, elevation	
Airport, landing field, landing strip	
National boundary	
State boundary	
County boundary	
National or State reservation boundary	
Land grant boundary	
U.S. public lands survey: range, township, section	
Range, township, section line, unpatented	
Power transmission line, pipeline	
Dam, dam with lock	
Cemetery, building	
Windmill, water well, spring	
Monument, well or cave, mine, quarry, gravel pit	
Campground, picnic area, U.S. location monument	
Ruins: cliff dwelling	
Disturbed surface: strip mine, low, sand	
Contours: index, intermediate, supplementary	
Barometric contours: index, intermediate	
Stream: lake, perennial, intermittent	
Rapids, large and small; falls, large and small	
Area to be submerged: marsh, swamp	
Land subject to controlled inundation, woodland	
Scrub, mangrove	
Orchard, vineyard	

A pamphlet describing topographic maps is available on request

SEDAN, KANSAS
37096-A1-TM-100
1985
PHOTOINSPECTED 1985