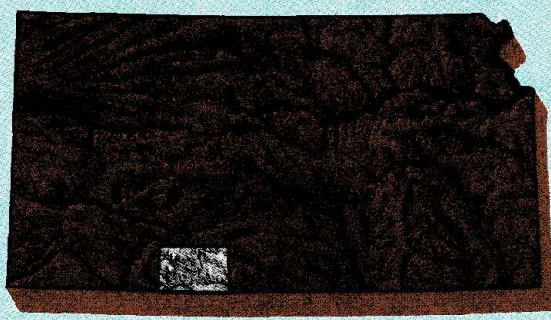


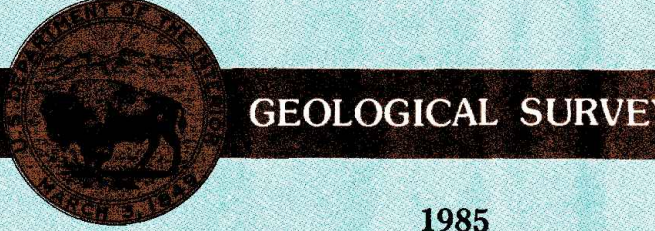
Protection  
KANSAS-OKLAHOMA

1:100 000-scale metric  
topographic map



30 X 60 MINUTE QUADRANGLE  
SHOWING



- Contours and elevations in meters
- Highways, roads and other manmade structures
- Water features
- Woodland areas
- Geographic names



Produced by the United States Geological Survey  
Compiled from USGS 1:24 000-scale topographic maps dated 1967-1980. Flanmtery revised from aerial photographs taken 1981 and other source data. Revised information not field checked. Map edited 1985  
Projection and 10 000-meter grid, zone 14,  
Universal Transverse Mercator  
25 000-foot grid ticks based on Kansas coordinate system, south zone  
1927 North American Datum  
To place on the predicted North American Datum 1983, move the projection lines 33 meters east  
There may be private inholdings within the boundaries of the National or State reservations shown on this map

CONTOUR INTERVAL 10 METERS  
NATIONAL GEODETIC VERTICAL DATUM OF 1929  
ELEVATIONS SHOWN TO THE NEAREST METER

THIS MAP COMPLIES WITH NATIONAL MAP ACCURACY STANDARDS

CONVERSION TABLE		DECLINATION DIAGRAM		ADJOINING MAPS				
Meters	Feet			1	2	3		
1	3.2808		0°15' N 5 MILS	4	5			
2	6.5617							
3	9.8425							
4	13.1234							
5	16.4042							
6	19.6850							
7	22.9658							
8	26.2467							
9	29.5275							
10	32.8084							
To convert meters to feet multiply by 3.2808		UTM grid convergence (GN) and 1983 magnetic declination (M) at center of map		1 Dodge City				
To convert feet to meters multiply by 0.3048		Diagram is approximate		2 Kinsley				
				3 Pratt				
				4 Liberal				
				5 Medicine Lodge				
				6 Beaver				
				7 Buffalo				
				8 Alva				

FOR SALE BY U. S. GEOLOGICAL SURVEY  
DENVER, COLORADO 80225, OR RESTON, VIRGINIA 22092

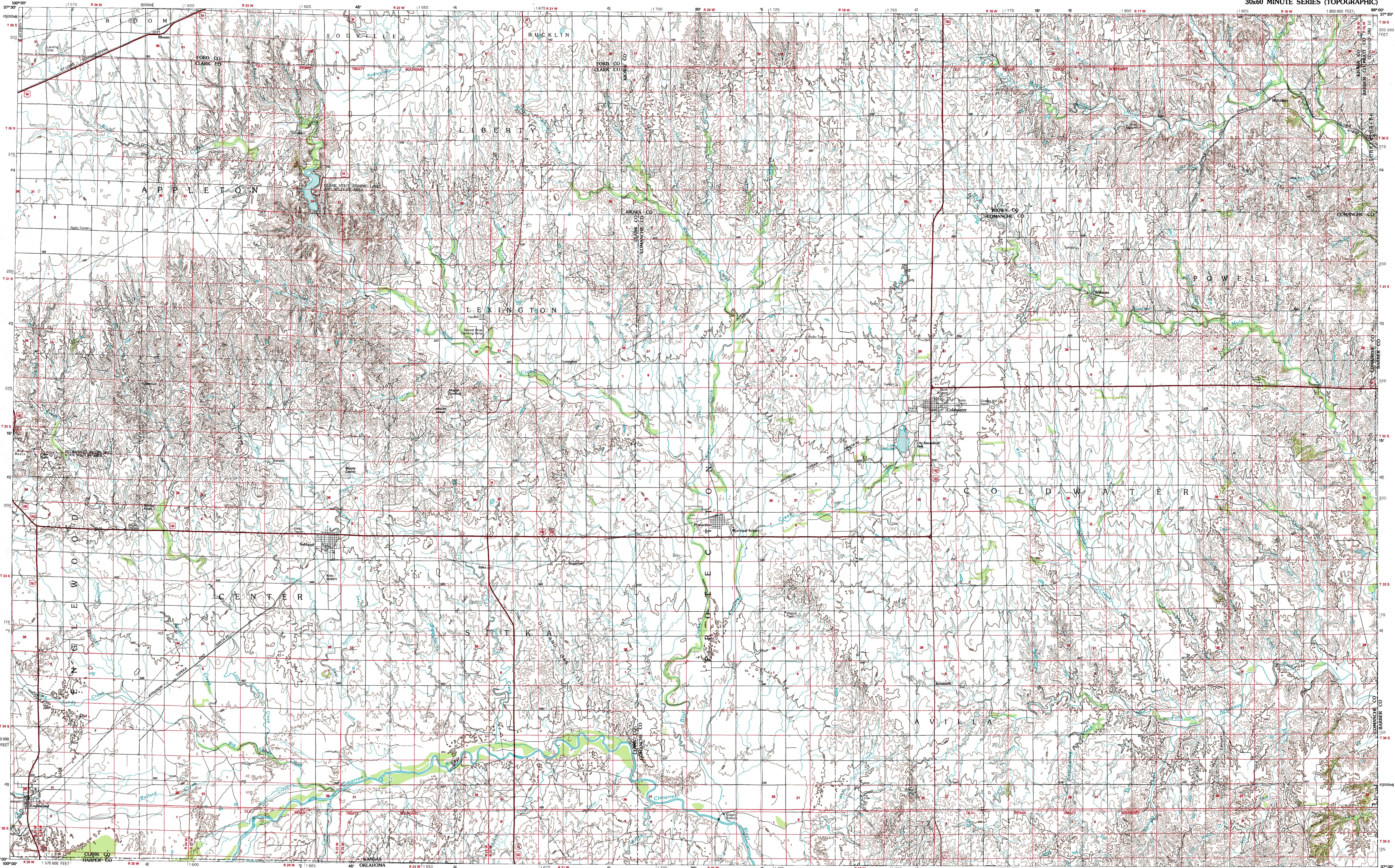
Topographic Map Symbols

Primary highway, hard surface	
Secondary highway, hard surface	
Light duty road, principal street, hard or improved surface	
Other road or street, fair	
Route marker, Interstate U.S., State	
Railroad, standard gage; narrow gage	
Bridge, overpass, underpass	
Tunnel, road, railroad	
Built up area, locality, elevation	
Airport, landing field, landing strip	
National boundary	
State boundary	
County boundary	
National or State reservation boundary	
Land grant boundary	
U.S. public lands survey: range, township, section	
Range, township, section line, projected	
Power transmission line: pipeline	
Dam; dam with lock	
Cemetery: building	
Winding; water well, spring	
Mine shaft; adit or cave; mine, quarry, gravel pit	
Campground; picnic area; U.S. location monument	
Runs; cliff dwelling	
Distorted surface: strip mine, lava, sand	
Contours: index, intermediate, supplementary	
Hydrographic contours: index, intermediate	
Stream, lake; perennial, intermittent	
Rapids, large and small; falls, large and small	
Area to be submerged; marsh, swamp	
Land subject to controlled inundation; woodland	
Scrub, mangrove	
Orchard, vineyard	

A pamphlet describing topographic maps is available on request

PROTECTION, KANSAS-OKLAHOMA

30x60 MINUTE SERIES (TOPOGRAPHIC)



• INTERIOR—GEOLOGICAL SURVEY, RESTON, VIRGINIA—1986

KILOMETERS 1 0 1 2 3 4 5 6 7 8 9 10 11 12 13 14 15 16 17 18 19 20  
MILES 1 0 1 2 3 4 5 6 7 8 9 10 11 12 13 14 15 16 17 18 19 20

SCALE 1:100 000  
1 CENTIMETER ON THE MAP REPRESENTS 1 KILOMETER ON THE GROUND  
CONTOUR INTERVAL 10 METERS

1000 0 5000 10000 15000 20000 30000 40000 50000 60000 70000 FEET

PROTECTION, KANSAS-OKLAHOMA  
37099-A1-TM-100