

Springfield

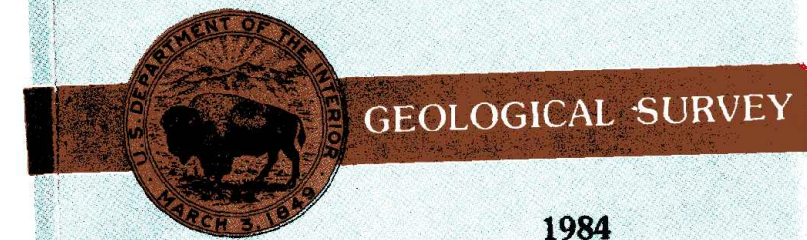
COLORADO-KANSAS-OKLAHOMA

1:100 000-scale metric
topographic map



30 X 60 MINUTE QUADRANGLE
SHOWING

- Contours and elevations in meters
- Highways, roads and other manmade structures
- Water features
- Woodland areas
- Geographic names



Produced by the United States Geological Survey
Compiled from USGS 1:24 000-scale topographic maps
dated 1978-79. Map edited 1984
Projection and 10 000-meter grid, zone 13
Universal Transverse Mercator
25 000-foot grid ticks based on Colorado coordinate system,
south zone, and Kansas coordinate system, south zone
1927 North American Datum
To place on the predicted North American Datum 1983 move
the projection lines 2 meters north and 42 meters east
Land lines are omitted in areas of extensive tract surveys

There may be private inholdings within the boundaries of the
National or State reservations shown on this map

CONTOUR INTERVAL 10 METERS
NATIONAL GEODETIC VERTICAL DATUM OF 1929

THIS MAP COMPLIES WITH NATIONAL MAP ACCURACY STANDARDS

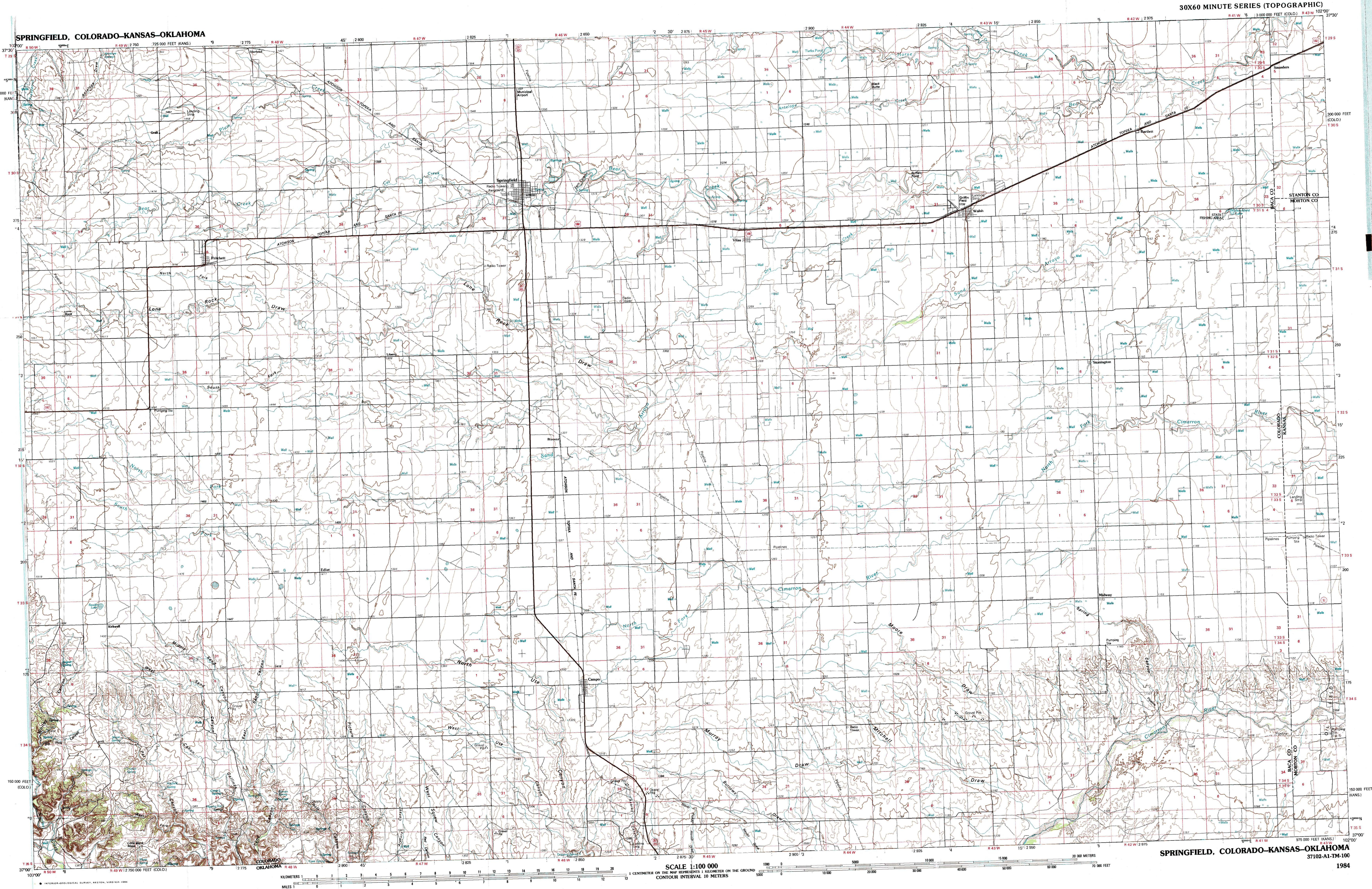
CONVERSION TABLE		DECLINATION DIAGRAM		ADJOINING MAPS			
Meters	Feet			1	2	3	
2	6.5608		4	5			
4	13.1216		6	7	8		
6	19.6824						
8	26.2432						
10	32.8040						
To convert meters to feet multiply by 3.2808			UTM grid convergence (65N) and 1484 magnetic inclination (M4) at center of map Declination is approximate				
To convert feet to meters multiply by 0.3048			1 La Junta 2 Two Buttes Reservoir 3 4 Kilm 5 Daguerre 6 Capitola Mesa 7 Boker City 8 Gorman				

FOR SALE BY U. S. GEOLOGICAL SURVEY, DENVER, COLORADO 80225
OR RESTON, VIRGINIA 22092

Topographic Map Symbols

Primary highway, hard surface	
Secondary highway, hard surface	
Light duty road, principal street, hard or improved surface	
Other road or street, trail	
Route marker: Interstate; U. S.; State	
Railroad: standard gauge, narrow gauge	
Bridge: overpass, viaduct	
Tunnel: road, railroad	
Built up area: locality, elevation	
Airport: landing field, landing strip	
National boundary	
State boundary	
County boundary	
National or State reservation boundary	
Land grant boundary	
U. S. public lands survey: range, township, section	
Range: township, section line, projected	
Power: transmission line, pipeline	
Dam: dam with lock	
Cemetery: building	
Windmill; water well; spring	
Mine shaft; pit or cave; mine, quarry; gravel pit	
Campground; picnic area; U. S. location monument	
Ruin; old dwelling	
Disturbed surface: strip mine, lava, sand	
Contours: index; intermediate; supplementary	
Barometric contours: index; intermediate	
Stream, lake: perennial, intermittent	
Rapids, large and small; falls, large and small	
Area to be submerged; marsh, swamp	
Land subject to controlled inundation; woodland	
Scrub: mesquite	
Orchard; vineyard	

A pamphlet describing topographic maps is available on request



SPRINGFIELD, COLORADO-KANSAS-OKLAHOMA
37102-A1-TM-100

1984

SCALE 1:100 000

1 CENTIMETER ON THE MAP REPRESENTS 1 KILOMETER ON THE GROUND
CONTOUR INTERVAL 10 METERS

