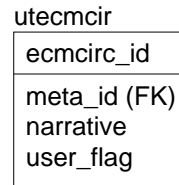
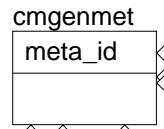
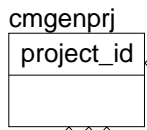
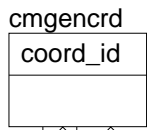
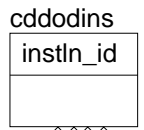
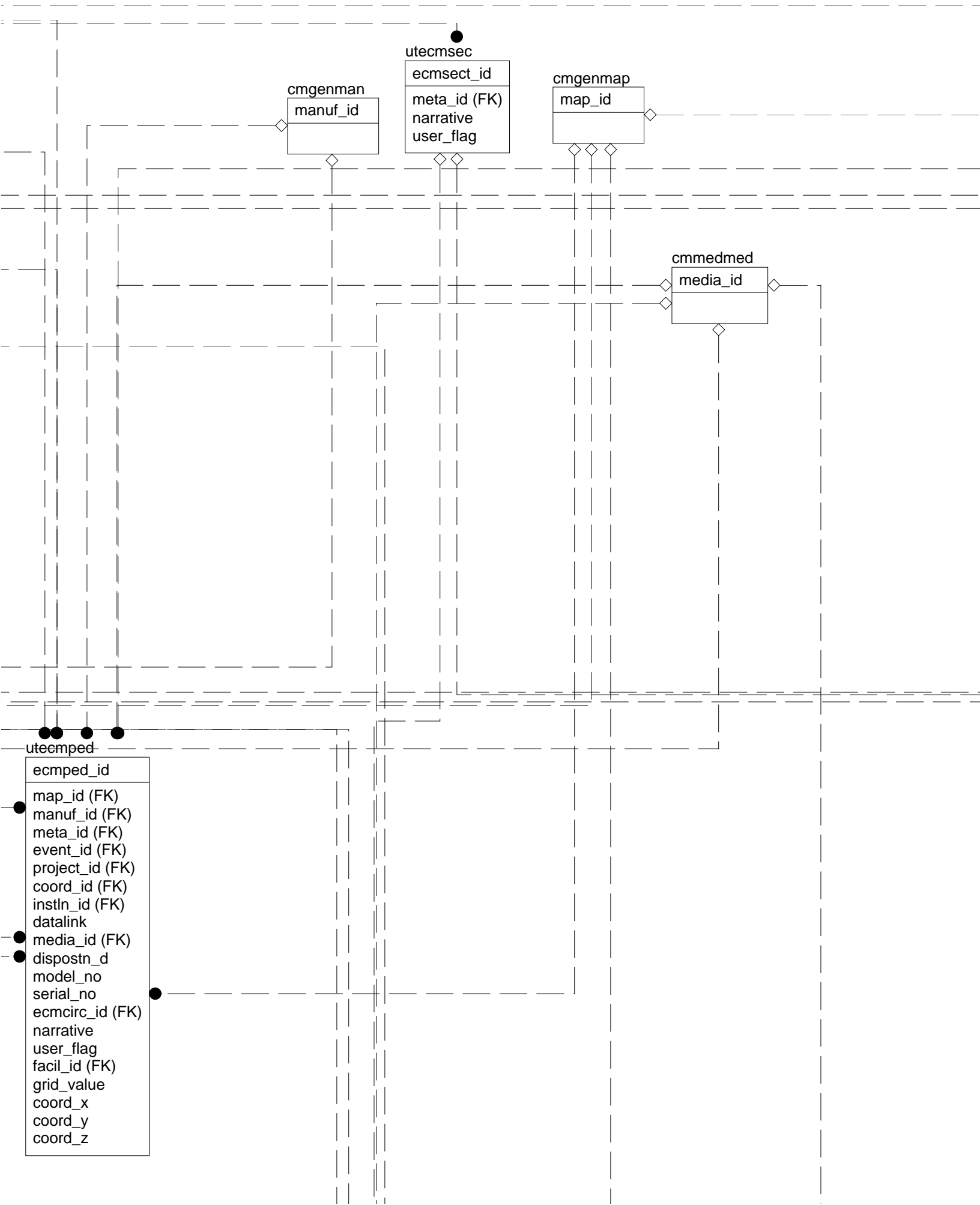
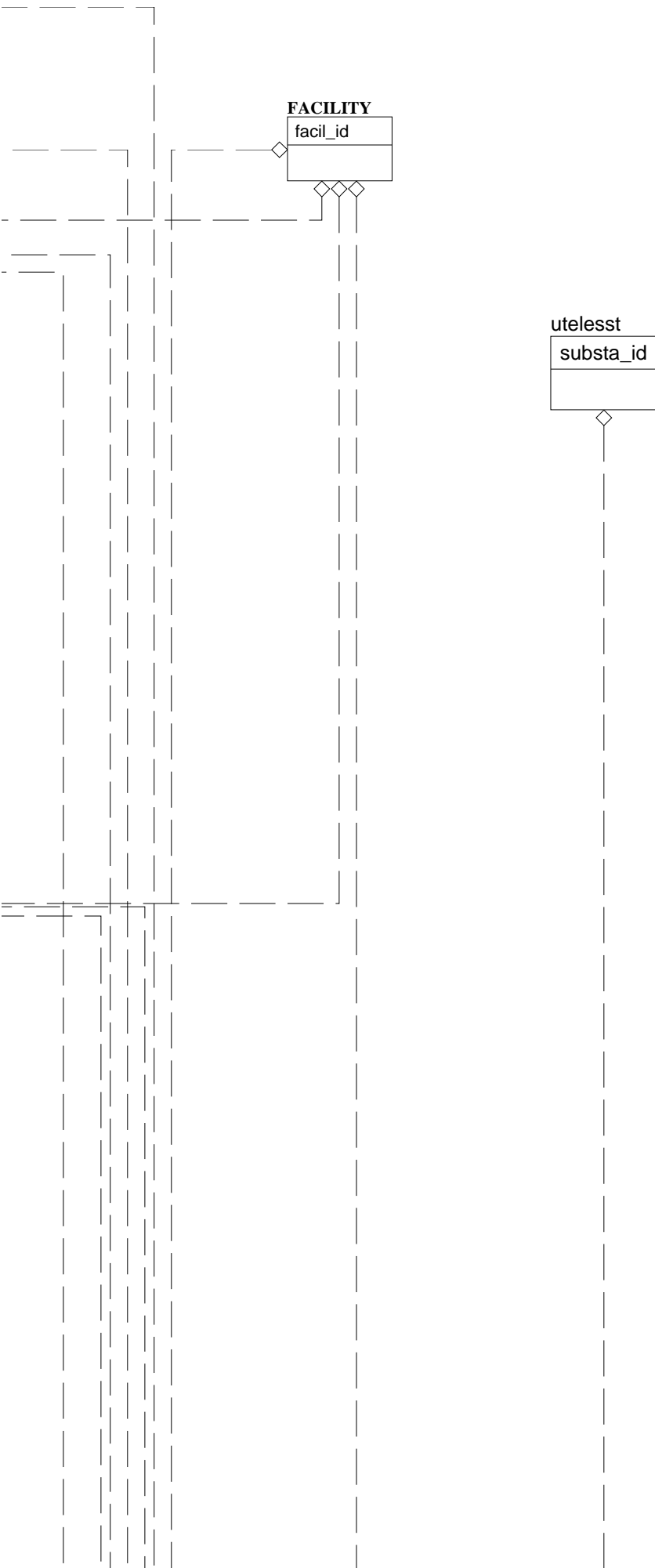


ERwin Model Reverse-Engineered from
D:\WORK\CAD\MODEL\SQL\UTECM17.SQL
Fri May 23 13:41:00 1997







device_id
map_id (FK)
manuf_id (FK)
meta_id (FK)
project_id (FK)
coord_id (FK)
instln_id (FK)
datalink
media_id (FK)
date_manuf
dispostn_d
dev_ty_d
instl_ty_d
no_pairlnk
readout_d
impedance
imped_u_d
anlg_in
anlg_in_sp
anlg_ot
anlg_ot_sp
dgtl_in
dgtl_in_sp
dgtl_ot
dgtl_ot_sp
model_no
serial_no
narrative
user_flag
facil_id (FK)
grid_value
coord_x
coord_y
coord_z

utecmcd

cable_id (FK)
device_id (FK)
port_no
term_no

utecmcbl

●	cable_id
	map_id (FK)
	meta_id (FK)
	project_id (FK)
	coord_id (FK)
	instln_id (FK)
	datalink
	media_id (FK)
	dispostn_d
	instl_ty_d
	cbl_ty_d
	cbl_mat_d
	cbl_sht_d
	cbl_lenght
	lenght_u_d
	cbl_dim_d
	no_links
	no_pairs
	loosbuf_d
	db_loss
	ecmcirc_id (FK)
	ecmdbnk_id (FK)
	ecmsest_id (FK)
	narrative
	user_flag
	facil_id (FK)
	grid_value
	coord_x
	coord_y
	coord_z
●	frcoord_x
	frcoord_y
	tocoord_x
	tocoord_y
	tocoord_z



utecmdbk

ecmdbnk_id
substa_id (FK)
map_id (FK)
meta_id (FK)
project_id (FK)
instln_id (FK)
datalink
media_id (FK)
coord_id (FK)
dispostn_d
duct_mat_d
no_ducts
no_spare
voltage_d
dbk_size_d
dbk_length
length_u_d
ecmsect_id (FK)
narrative
user_flag
facil_id (FK)
grid_value
coord_x
coord_y
coord_z
frcoord_x
frcoord_y
tocoord_x
tocoord_y
tocoord_z

