

## Regional Homeland Security GIS Project

-Northwest Region-



## Topics

- GIS – What is it?
- Proposed Plan of Action
  - GIS Inventory
  - Sub-Regional Stakeholders Meetings
  - GIS Training
  - GPS Training
  - GIS Equipment and Software
  - GIS Technical Subcommittee
- State HLS Support Team

## GIS – What is it?

## GIS – What is it?

- GIS, geographic information system, is a **system of hardware, software and personnel** that utilizes **digital geographical data** to analyze, store, manipulate, visualize, and make better informed **decisions** about some portion of the earth.

## Why a GIS Project?

- The Situation
  - 4 Federal Declared Disasters in 2007
    - Winter Storms & Ice (January)
    - Tornado & Flooding (May)
    - Flooding (June)
    - Ice & Snow (December)
  - Development of Incident Management Teams
  - GIS – powerful tool for responders

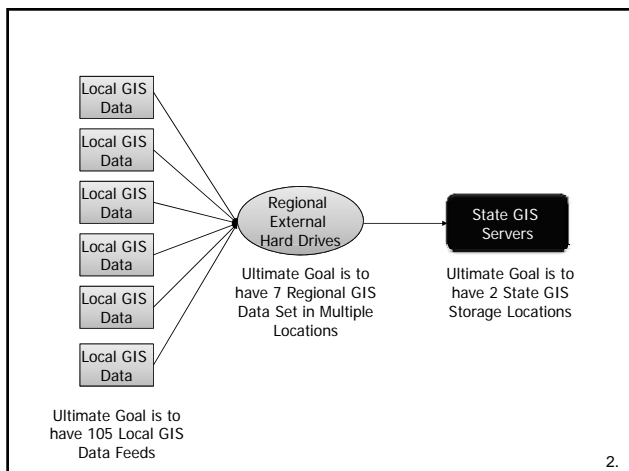
2.

## The Adjutant General's Vision

Goals for GIS within homeland security and emergency response

- “Critical GIS data layers statewide”
- Regional Archives
- Offsite back-up of local data at DASC
- Rapid accessibility of local data for Incident Management Teams
- Rapid accessibility of local data at State Emergency Operations Center

2.



2.



2.

## Pre-Identified Challenges

- Varied levels of GIS across the region
- Creation & coordination of seamless data layers across the region
- Maintenance of data
- Identification & completion of critical data layers across the region

2.

## Proposed Plan of Action

## Planning Efforts

- Inventory GIS efforts (by county)
- Four regional stakeholder meetings
- Identification of critical data layers (by region)
- Gather GIS data and prepare an easy to use mapping application

3.

## What "We" Will Provide

- Vendor standards
- GIS Data Memorandum of Agreement
- Creation of seamless regional layers (from local data)
- Data model for local GIS professional

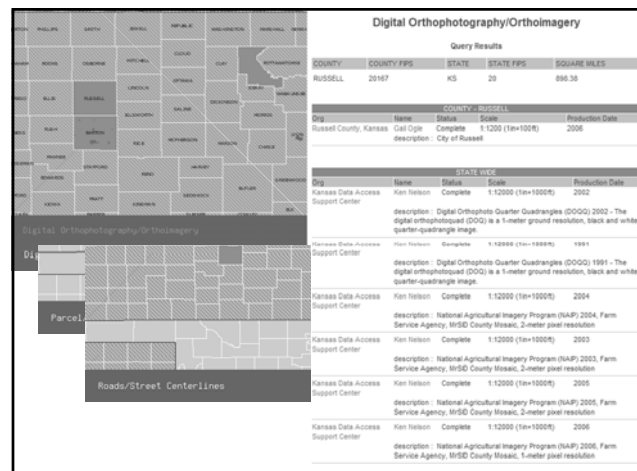
## GIS Inventory

## What is a GIS Inventory?

- Inventory will gather information on GIS...
  - Hardware
  - Software
  - Personnel
  - GIS Data
- Foundation for Gap Analysis
  - Must know what exists in order to complete the “quilt”

## What is a GIS Inventory? - Continued -

- Visit each county to initiate the inventory
  - DASC will coordinate site visits
  - Goal is to visit every county within two weeks
- At least two Support Team members will visit GIS personnel or POC in the identified counties
  - Introduction to the Kansas GIS Inventory tool
  - Assist in identifying categories for existing data



## Sub-Regional MVP Meetings

(Most Valuable Professionals)

## Sub-Regional MVP Meetings

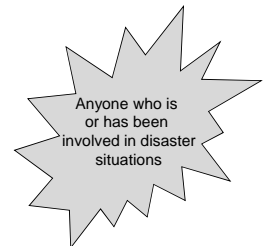
- 4 Locations (determined by the council)
- Two Sites per Day
  - Letter from the Regional Council Chair to each of the 18 counties
- Length of Time: Two hours

## Why Sub-Regional Meetings?

- Provide responders within each county:
  - Project overview and why it is important
  - A voice in determining what are truly “critical” data layers in this region
- Support Team will facilitate each of the meetings
  - The Kansas Collaborative
  - Kansas Homeland Security GIS Coordinator
  - DASC Representative

## Who is a MVP?

- Members of the response community
  - Emergency Management
  - 911
  - Communications
  - Law Enforcement
  - Fire
  - Emergency Medical Services
  - Health
  - County Extension Agent
  - GIS Personnel



### Sub-Regional MVP Meetings

- Chairperson
  - Invite to the counties to 1 of the 4 meetings
  - Support Team can draft the letter
- Council Members
  - Participation
  - Spread the word!

### Regional GIS Training

### GIS Training

- 2 Location (determined by the council)
- 2 day hands-on training for emergency responders
- Contracted (GISEdge)

### Regional GPS Training

### GPS Training

- 4 Location (determined by the council)
- 1 day hands-on training for emergency responders
- Contracted (Steve Thompson)

### Equipment and Software

### Equipment and Software

- ArcView (single-use) license
  - ~\$1224
  - Additional maintenance (\$400-\$300) per year per license
- ArcGIS Extension
  - ~\$2040
- GPS Unit (Mapping Grade)
  - ~\$2749

### Equipment and Software

- External Hard Drive(s) – 1 TB
  - ~\$250
- Flash Drives – 8 GB
  - ~\$65

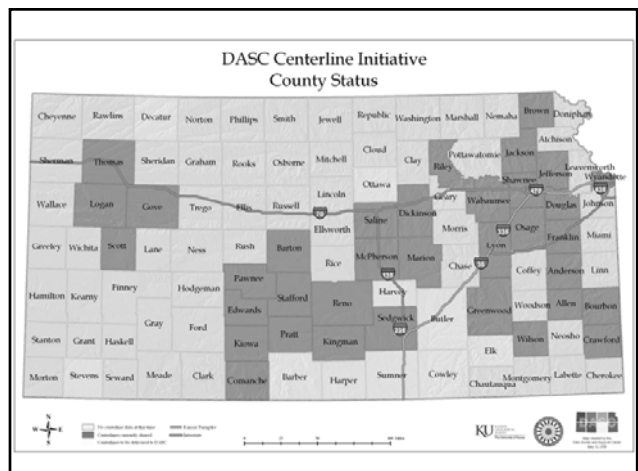
## GIS Technical Subcommittee

### Regional GIS Technical Subcommittee

- Aid in gap analysis with the Support Team
- Provide recommendation on “filling” the gaps
- Provide guidance on data priority
- Provide guidance on equipment purchases

## GIS “Champions”

- Your support is the success of this project





## State HLS Support Team

## Support Team

- **Jessica Frye**, Kansas Homeland Security GIS Coordinator
- **Ivan Weichert**, Kansas GIS Coordinator
- **Ken Nelson**, Data Access and Support Center
- **Eileen Battles**, Data Access and Support Center
- **Ingrid Landgraf**, U.S. Geological Survey
- **Kathleen Harnish-Doucet**, The Kansas Collaborative
- **Joel Wright**, The Kansas Collaborative

10.

Questions?

Thank you!

*Jessica Frye*

Kansas Homeland Security GIS Coordinator  
jessica.frye@tag.ks.gov  
785-274-1610