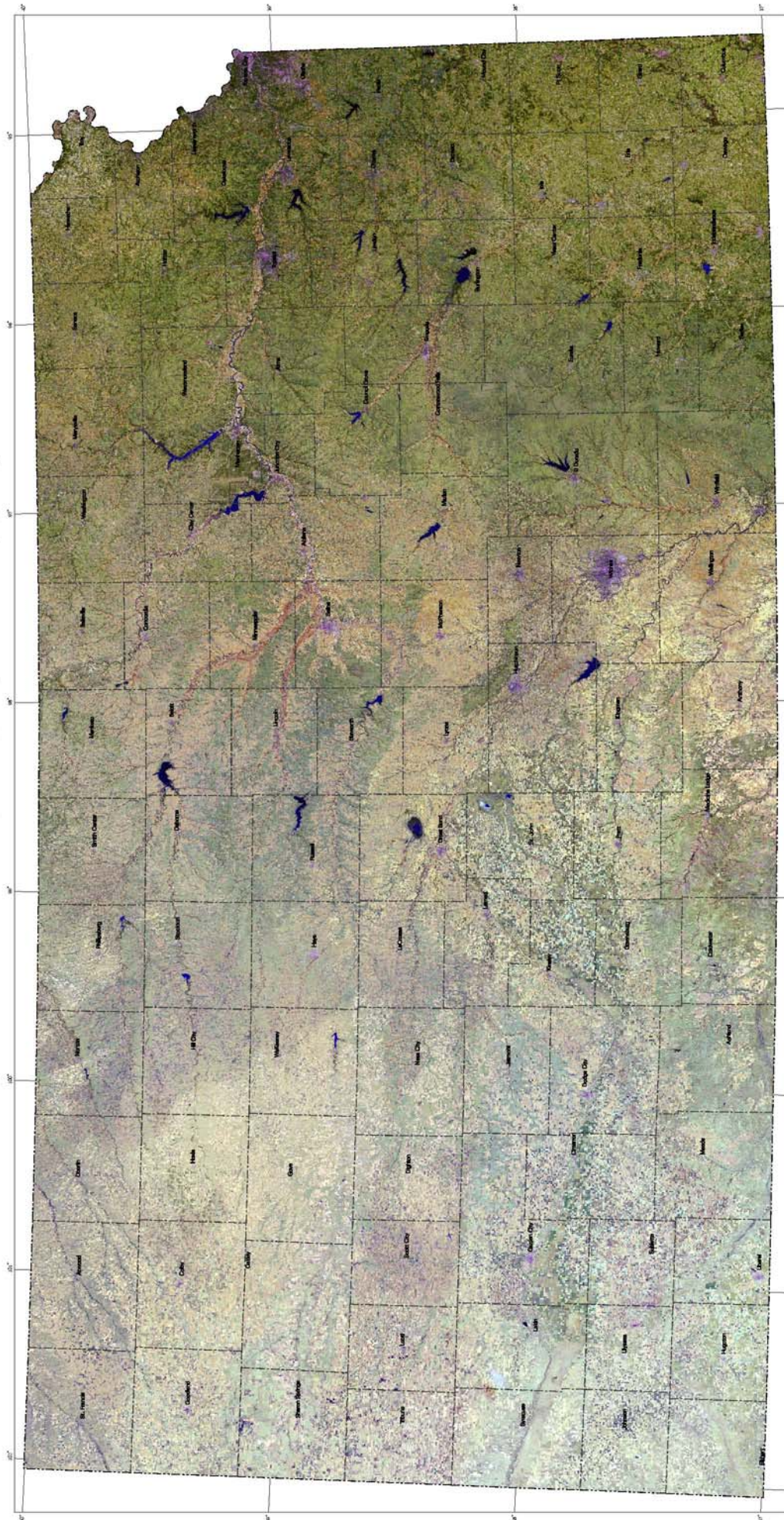


SATELLITE VIEW OF KANSAS



County Shown in Black

Scale 1:750,000

1 inch equals approximately 17 miles

0 10 20 30 40 50 Miles

0 10 20 30 40 50 Kilometers

Source: National Aeronautics and Space Administration (NASA) and the U.S. Geological Survey (USGS)

KARS
Kansas Agricultural Experiment Station

KANSAS BIOLOGICAL SURVEY

GP RESARC
Global Positioning System Research and Application Center

Copyright © 2007 by the Kansas Agricultural Experiment Station, a part of the University of Kansas. All rights reserved. This work is licensed under a Creative Commons Attribution-NonCommercial-ShareAlike 4.0 International License. For additional information, see the KARS homepage at <http://www.kars.ku.edu>

Legend

- Black lines: County boundaries
- Blue lines: Major rivers
- Green areas: Forested land
- Yellow areas: Agricultural land
- Brown areas: Barren land
- White areas: Urban/developed land

Inset Map

Shows the location of Kansas within the United States.

Notes:

The map is a composite of satellite imagery from the Landsat Thematic Mapper (TM) and the Advanced Very High Resolution Radiometer (AVHRR). The TM imagery was collected during the summer of 1986 through 1991. The AVHRR imagery was collected during the summer of 1991 through 1996. The map is a composite of these two datasets, with the TM imagery providing the base map and the AVHRR imagery providing the color overlay.

The map is a composite of satellite imagery from the Landsat Thematic Mapper (TM) and the Advanced Very High Resolution Radiometer (AVHRR). The TM imagery was collected during the summer of 1986 through 1991. The AVHRR imagery was collected during the summer of 1991 through 1996. The map is a composite of these two datasets, with the TM imagery providing the base map and the AVHRR imagery providing the color overlay.

Satellite View of Kansas

Satellite View of Kansas is a mosaic of 16 Landsat Thematic Mapper (TM) satellite images acquired during late summers of 1988 through 1993. The TM instrument records both reflected and emitted energy from the earth's surface in 7 regions, or bands, of the visible and infrared portions of the electromagnetic spectrum. Although the images depicted here appear in natural color — vegetation appears green, water appears blue — they are actually a composite of 2 infrared and 1 visible bands. Infrared bands are used because they are less affected by atmospheric scatter from water vapor and other airborne particles than visible bands. The benefit is a high-contrast, haze-free image.

State-wide management and planning, K-12 education, and beautiful wall art are but a few uses for this map. Details that can be seen include the Flint Hills, which are home to one of America's last large expanses of native prairie grassland. The uniform shades of green seen in east-central Kansas are indicative of unbroken grasslands that are characteristic of the Flint Hills. Further west, irrigated croplands dominate portions of the Arkansas River Lowlands. Crop circles resulting from center-pivot irrigation can be seen concentrated in the lower half of Finney County.

These and other details are clearly visible on a 38" x 25" full-color poster.

For additional information about the poster, please contact:

Kansas Biological Survey
Kansas Applied Remote Sensing
2101 Constant Avenue
Lawrence, KS 66047-3759
(785) 864-1500
www.kars.ku.edu

Outlets for the poster include:

Kansas Geological Survey
1930 Constant Ave.
Lawrence, KS 66047-3724
(785) 864-3965
www.kgs.ku.edu

The University of Kansas
Natural History Museum
1345 Jayhawk Blvd.
Lawrence, KS 66045-7561
(785) 864-4450
www.nhm.ku.edu

